



**Annual General Meeting
July 18th, 2015 at 10AM**

Regatta on August 1st, 2015

www.cranelakeassociation.ca

facebook.com/CraneLakeAssociation

cranelakeassociation@gmail.com



President's Letter

Darlene Cade Fraser

Following one of the deepest winters we have experienced in a long time in Ontario, we are suddenly thrust into spring and summer, and we welcome it with open arms! The forest and fauna are already rich with colour and the water temperature is on the rise. By the time of printing, summer will be in full swing and we will be enjoying the thrill of water activities, a cold refreshment on the dock with family, friends and neighbours, and during the quiet of an early morning or late evening, the comforting, familiar call of the loon. We are back home at Crane Lake – and it feels good!

The steering committee for the Lake Plan worked diligently throughout the winter months compiling the necessary supporting information to finalize the project, and presented their final version of the Lake Plan to the CLA Board for its' review. With only a few revisions required, and after almost two years of work, the Lake Plan is now complete!

Enclosed for your easy reference is the Executive Summary of the Plan. Please visit the Crane Lake Association website www.cranelakeassociation.ca/lakeplan for the complete Lake Plan (35 pages). We encourage every property owner to take the time to read the Lake Plan. It is an exceptional collection of current and historical facts of our neighbourhood at Crane Lake. It also summarizes the collective passion of all stakeholders of Crane Lake for the importance of our water quality and what actions are required to proactively protect it. Alongside water quality, other important values were established from the input by those that participated in the survey and

workshops. Accompanying action plans are described, all with the intention of preserving Crane Lake for our own continued enjoyment and for those who follow us in future generations. The CLA board is very proud to present this Lake Plan to the CLA members at the AGM, and immediately thereafter to the Township of the Archipelago as their reference document for Crane Lake. The following is extracted from the Executive Summary:

"The intent of the Lake Plan is to protect what is currently respected as unique characteristics of the Crane Lake neighbourhood by developing a framework for the discussion and implementation of responsible, sustainable, and effective stewardship practices in the community. The ultimate goal of the Lake Plan is to serve as a collective voice for the stakeholders of Crane Lake providing a guiding document to local governments and residents with a current snapshot of our neighbourhood and a template for future generations."

The results of the Lake Plan survey and the additional input received from the workshops clearly depict a common theme of respect. Respect for our natural environment, respect for our future and respect for others in our community have, as a result, been woven into the fabric of the Lake Plan. Not surprisingly, with our good water quality, swimming and boating are favourite activities of most property owners on Crane Lake. There are all kinds of watercraft available for boating enjoyment. Whether powered or unpowered, as with automobiles, there is an essential level of respect for others required while operating any vessel. Safety of passengers, preservation of our vulnerable natural shorelines from large wakes, attentiveness to potential swimmers in the water, and a general awareness of other boats in the near proximity, are

all valid and necessary areas of concern that should be respected by all boat operators. In response to what we have learned from the Lake Plan, this edition of our Newsletter focuses on responsible boating and encourages all that enjoy boating to have respect for others and the natural shorelines of Crane Lake.

As you are all well aware, the Crane Lake Resort closed on December 31st, 2014 forever. However, the store and the gas pumps are now operated by Mike Steele and we encourage all cottagers and their guests to visit regularly. We must support our local service providers as without them our lives at Crane Lake could be much more difficult.

The AGM for the Crane Lake Association is scheduled for Saturday July 18th at 10:00a.m.,

and, thanks to the generosity of Ned and Georgina McLennan, we will meet in the Reception Hall at the Resort as usual. We encourage you to bring family and friends to the AGM to catch up on the activities undertaken by your Board, and to visit with friends and neighbours over a cup of coffee. Our Agenda is enclosed.

There are several articles by board members and Ian Mead, Councillor, that are of great interest, so please enjoy a few minutes to read this Newsletter and share it with others in your cottage! A copy is also on the website. We are all looking forward to a wonderful, warm and safe summer! Have Fun!

Councillor Contact

Address:

206 Crane Lake Water
The Archipelago, Ontario
P2A 0B7

Phone:

705-378-2089 - summer
705-484-5235 - winter
905-301-4583 - cell

Councillor's Report

Ian Mead

Spring is finally here, the lake is free of ice and everything is greening up. This time of year between ice out and black flies is probably my favorite time at Crane. It hasn't been very long since the last newsletter so this won't be a long communication.

Waste Transfer Sites

Last year all the transfer site attendants recorded how many people visited the site and when by the hour. As a result we had excellent data in order to make small adjustment to when the sites would be open and have minimal if any impact to ratepayers. This exercise resulted in a savings of approximately \$26000.00 in the South Archipelago alone. You will have already received a communication from the Township regarding waste site and hours of operation and I ask you to please take a look and note the changes made at Crane and Healy Lake transfer sites. It is savings like this that help us to control taxes. More on that in the communication that will come with you summer tax bill.

GBBR and "Love Your Lake"

As I mentioned in the February newsletter, the TOA has once again partnered with the GBBR (Georgian Bay Biosphere Reserve) and they are our "environmental" department bringing us tremendous environmental expertise at a very low cost. This summer the GBBR are going to carry out a program on Crane called "Love Your Lake". This is a program that was developed by the Muskoka Watershed Council and has received raving

reviews in Muskoka and also Georgian Bay Township in the Honey Harbour area. **Love Your Lake** is a shoreline assessment and stewardship education program. It provides land owners with property-specific analysis and voluntary recommendations to improve lake health. More information can be found at www.loveyourlake.ca. The data collected about each property will be summarized into unique shoreline property reports available to only the land owner. The reports include a photo of the waterfront property and provide recommendations for voluntary actions to improve shoreline health and water quality. All of the information collected will be handled in accordance to the Personal Information Protection and Electronic Documents Act.

Friends of Belvedere

The "Friends of Belvedere" is a group of hard working, dedicated individuals who constantly raise funds to contribute to Belvedere home for the aged in Parry Sound. One very successful campaign is the collecting of aluminum products which are then sold for the metal. In our neck of the woods, Rita Kunc (a long time member of the Friends of Belvedere) puts a container at the Crane/Blackstone Lake waste site and asks that people put their empty aluminum cans etc in it when they dispose of the rest of their waste. Please take the time to help out this cause by putting your aluminum waste in Rita's container.

Are you on my E-mail List:

If you currently are not on my E-mail list and would like to be, just send me an E-mail at ianm@vianet.ca and ask me to add you.

Cheers -Ian

Annual General Meeting | July 18, 2015

Crane Lake Association



The Annual General Meeting of the Crane Lake Association will be taking place this year on Saturday July 18th, 2015. We are pleased to have the support of the Crane Lake Resort owners, who have allowed us to continue to use the Resort's Hall as our meeting location. The following is an agenda of the meeting. With the announcement of the formal Lake Plan of Crane Lake, we hope to see you all there!

Crane Lake Association Annual General Meeting **Saturday, July 18th 2015** **Crane Lake Resort | 10:00A.M.**

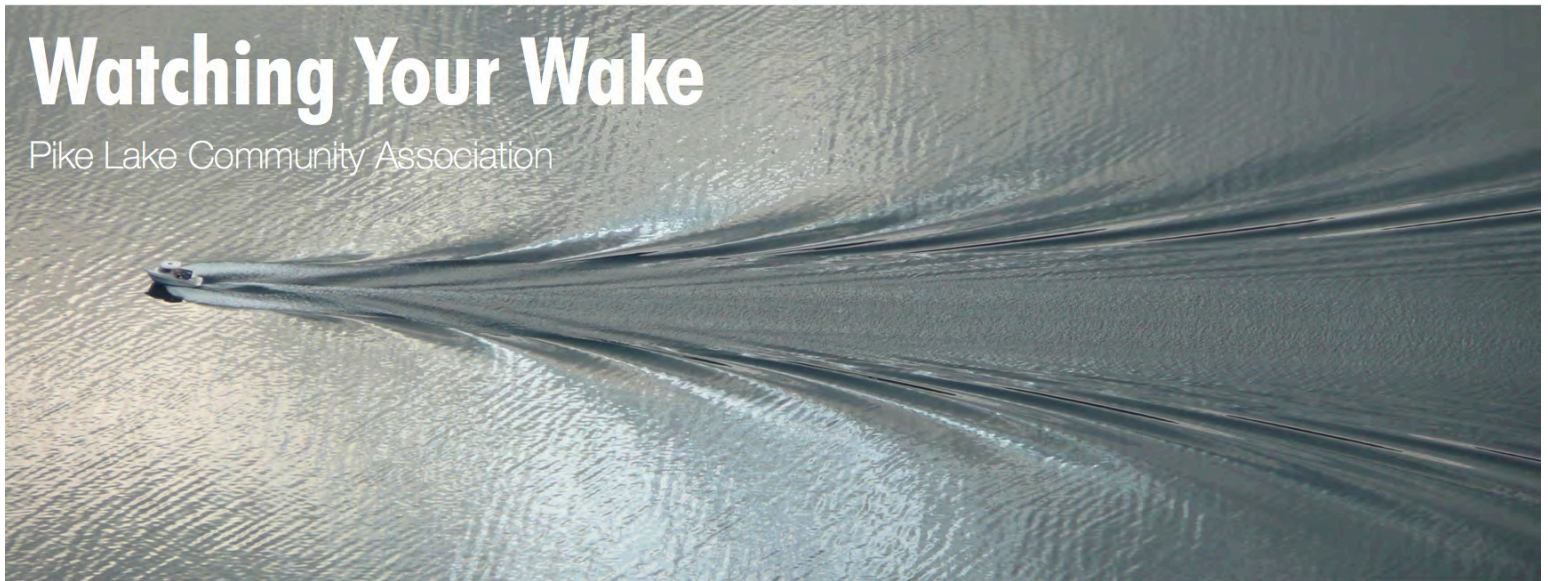
AGENDA

1. Welcome
2. Minutes of the 2014 AGM
3. Treasurer's Report / Membership update
4. Guest Speaker - Brian Mills (Georgian Bay Biosphere Reserve) -
Presenting Results of "Love Your Lake" survey on Crane Lake
5. Water Quality Report
6. Councillor's Report
7. Fire Committee Report
8. Regatta Update
9. Presentation of the Lake Plan
10. Crane Lake Welcome Binder
11. Election of Board of Directors for 2015 -2016 term

Note: Draft Minutes from the 2014 AGM are available online for your review prior to the meeting. Visit www.cranelakeassociation.ca/agm-minutes and read through before July 18th where we will vote to approve the minutes. Limited copies will be available in print at the meeting as well.

Watching Your Wake

Pike Lake Community Association



The Crane Lake Association belongs to the Federation of Ontario Cottagers' Associations. An organization with over 50 years of history, FOCA represents cottage and waterfront property owners at various levels of government and acts as an advocacy organization. The following are selections from a document prepared by another member organization, the Pike Lake Community Association, called "Watching your Wake". For the full document, visit: www.foca.om.ca/watch-your-wake/

* * * * *

Cottagers derive a great deal of enjoyment from a host of boating activities... Those of us with our pleasure craft license studied specific rules of the water geared to safe & responsible boating; most of us are familiar with general boat safety & etiquette. We may not be as familiar with the impact of boat wake.

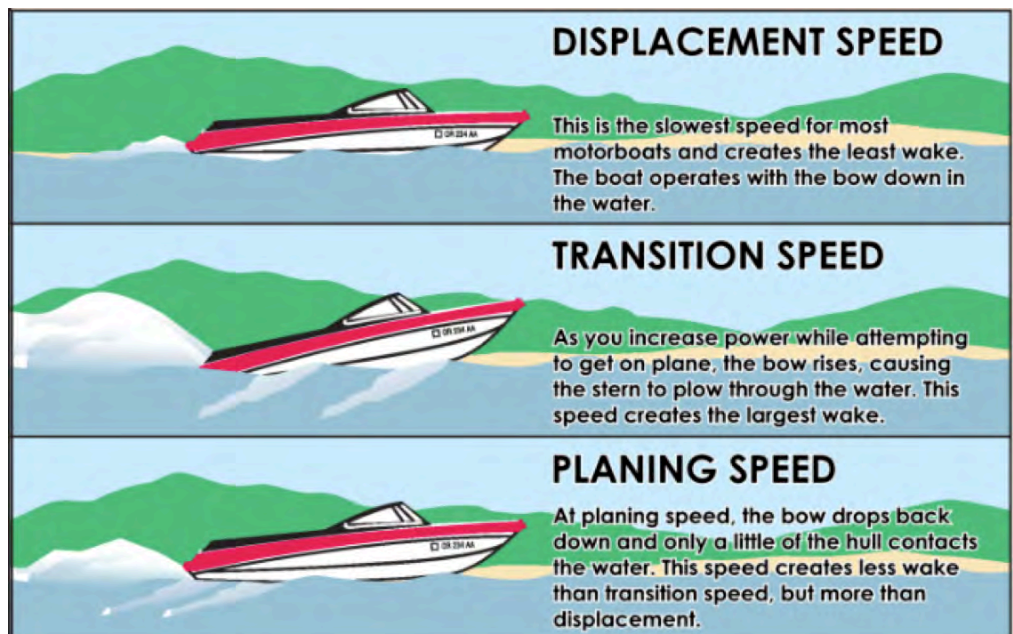
Impact of Boat Wake

The larger the wake, the greater the potential for undesirable side effects.

- Loons & other birds that nest along the shore chose locations that are protected from waves generated by the prevailing winds. However, boat wake, which can come from any direction, can & does drown the nests & the young, particularly in May & June.
- Inexperienced swimmers and young children are not usually in the water when wind-driven waves are high. However, they can be toppled by the size & energy of boat wake.

- Boat wake & prop wash can churn up sediments in shallow water which releases dormant nutrients that promote weed growth & algal blooms.
- Boat wake can cause erosion.
- Boat wake can cause docks & moored boats to rock severely & pull mooring hardware.

Observations made by the Oregon State Marine Board have shown the effects of three speed zones: displacement, transition & planing.



Waves & Erosion

Natural causes of shoreline erosion include wind-driven waves, water levels, ice, slope of the bank, and absence of vegetation.



**Hamer
Bay
Marine
Ltd.**

**CERTIFIED
TECHNICIANS
7 DAYS A WEEK**

EVINRUDE
E-TEC



**VOLVO
PENTA**

• Boat Rentals • Service • Sales • Ice Cream Shop • Sailboats and Rigging

705-375-2232

www.hamerbaymarine.com



1 km off Lake Joseph Road on
Hamer Bay, next door to
Rocky Crest Resort

BRUNATTI

G. BRUNATTI & SONS LTD.

85 River Street, Parry Sound, Ontario, P2A 2T8

Tel: (705) 746-5622 Fax: (705) 746-8688

Designer and manufacturer of vinyl, canvas
and mesh products including:

- boat covers
- tarpaulins
- a complete line of boat seating

We are now the manufacturer of Cygnet Marine Upholstery!

Human causes include removal of rocks, trees, shrubs and other vegetation along the shoreline, retaining walls, and wave action from passing boats.

The size of the watercourse affects the potential for erosion to occur. The greater the distance the waves are generated from shore, the more opportunity they have to dissipate before reaching shore.

Wave height is one of the most important factors in shoreline erosion. Observations made by the Minnesota Department of Natural Resources have shown that:

- A wave that is 12.5cm high when it reaches the shore does not cause significant shoreline damage.
- Waves this high are generated by boats operating at speeds under 10 km/h - a speed generally considered to be reasonable when operating close to shore.
- A wave that is 25cm high is 4 times more destructive.
- At 65cm high, a wave is 25 times more destructive. (Source: Shoreline Erosion caused by Boat Wake)

Runabouts & waterski boats produce a 25cm high wave at the stern of the boat when at planing speed.

Wakeboard boats create a wake of half a metre or more.

The large waves produced by wakeboard boats don't always have the distance needed to dissipate before reaching shore. Hence, they can create a greater negative impact than other boats.

However, all boaters need to be aware of the size of wake they create.

Legislation & Recommendations

The Small Vessel Regulations stipulate that the legal speed limit for all motor boats is 10 km/h within 30 metres (98 feet) of any shore.

Waterski & Wakeboard Canada strongly recommends that wakeboard boats stay a minimum of 50 metres from any shore & in a minimum of 2 metres depth of water to reduce the effect of shoreline degradation & turbidity.

A number of governments & government agencies, as well as local organizations in Canada & the US are struggling with how to deal with the erosion & safety issues associated with wakeboarding. For example:

- The Safe Quiet Boating Association in the Muskoka Lakes area is working to change the legislation so that wakeboard boats operate 100 metres from shore.
- The District of Lake of the Woods Cottagers Associations has recommended that wakeboard boats operate 300 metres from shore to allow waves to lose their energy before reaching shore.

How you can be Wake Wise

1. Be aware of the size of your wake during displacement, transition & planing speeds.
2. Position your passengers through-out the boat in order to reduce the time spent in transition speed.
3. Look behind you to see & understand the impact of your wake on shorelines, docks, or other structures. Adjust your speed & direction to minimize the impact.
4. Respect the shoreline zone. Reduce your speed to less than 10 km/h within 30 metres of any shore including the narrow channels between islands.
5. Water-ski, tube & wake-board well away from all shorelines. Try to make use of the entire length of the lake.
6. Consider the size of the wake produced when purchasing a new boat.

Sources and the complete document are available at www.foca.on.ca/watch-your-wake/

CRANE LAKE REGATTA | AUGUST 1ST, 2015

CRANE LAKE RESORT BEACH AT 1PM



Water Quality Report

Devon Pirto



The 2015 cottage season is upon us and with that comes our water quality monitoring programs. In early May water clarity was tested in two pre-determined locations using a Secchi disk (large disc half white & half black lowered into the water) and then water samples were taken at the level where the disk was no longer visible (approximately 4.5 metres below the surface). These samples were then mailed off to the Lake Partner Program in Dorsett for total phosphorus testing. This sampling is done once per season though testing for water clarity at those two sites continues twice a month until the end of October.

The second part of our monitoring program will start at the end of June when 6 different sites will be tested for clarity and bacterial activity a total of six times throughout the summer months. The samples are processed at the lake with equipment provided by the Township of the Archipelago (TOA) and results then sent in for collation with data from other parts of the TOA. This year we are pleased to have the Georgian Bay Biosphere Reserve (GBBR) coordinating the Township water quality program as they offer expertise that was not previously readily available. The GBBR is in the process of surveying the volunteers to see what areas of the program need enhancing. I will share the results of their survey and any changes proposed in future newsletters. For now let's review the results of our testing from last year and see what the trends are.

Secchi Depth

For whatever reason last year was a particularly heavy pollen season and that was noticeable in our Secchi depth readings which reflect how far down we can see the disk when lowered into the water. Clouds of pollen made seeing the disk difficult in the early part of the summer.

Total Coliform (TC)

Total coliform bacteria levels tend to increase with water temperature and also in times of heavy rain due to run-off moving bacteria from decaying plant & animal material into the lake. Timing is everything then as readings can vary depending on when the last rain fall occurred. While there were some good rainfalls last summer only two of them coincided with sampling thus TC results were not elevated beyond the Township objective of 100.

Year	Secchi Depth	Total Coliform	E Coli	Total Phos
2014	4.4	85	5	5.1
2013	4.8	58	7	5.45
2012	5.2	169	16	4.9
2011	4.8	63	9	5.3
2010	4.8	66	10	3.9
2009	4.7	65	8	3.75
2008	4.3	55	12	3.45
2007	4.7	90	20	3.8

E Coli

A subset of TC, E coli are the bacteria found in the gut of animals and are therefore much less abundant in our lake water. While any reading above 0 indicates that the water is unsafe to drink without pre-treatment, the level of E coli found in our lake last year indicates that it is quite safe for recreational purposes and well within the TOA objectives of 10.

Total Phosphorus (TP)

These readings come from the samples sent to the Lake Partner Program. Results under 10 indicate the lake is oligotrophic and unlikely to experience algal blooms. While we have seen some increase in TP over the last 5 years we are still considered a low risk for algal blooms - which we never, ever want to happen to our beautiful lake!!!! Please do your part in making sure this never comes to pass by maintaining a natural shoreline full of trees and bushes whose roots will absorb phosphorus before it gets into our lake.

See you on the lake (particularly early Sunday morning when I often do my sampling!)

Board of Directors 2014 - 2015

Executive

Darlene Cade Fraser — President

Joan Debie — Vice President

Steven Neugebauer — Treasurer

Ross Fraser — Secretary & Communications

Fred Nagy — Past President

Don Ellis — Fire Committee

Carolyn Ferreira — Lake Plan

Lynda Mead — Advertising

Devon Piirto — Water Quality

Bruce Sanderson — Fire Committee Chair

cranelakeassociation@gmail.com

TOM'S

Renovation and General help

THOMAS FLEISCHMANN

59 Loucks Rd
Parry Sound, Seguin, ON

phone/fax 705-378-1944
mobile 705-773-3879

tfleischmann@live.ca

www.tom-can-help.com

"24 HR ACCESS"

BRUNATTI SELF-STORE

75 RIVER ST. PARRY SOUND



- 5' X 10' TO 12' X 28'
- U STORE U LOCK U KEEP KEY
- LONG TERM RATES
- SECURITY FENCE - WELL LIT
- BUSINESS, PERSONAL DOCUMENTS
- CARS, BOATS & SNO-MACHINES

705-746-5622
Office Located At 85 River St.

STINGRAY BOATS AUTHORIZED DEALER



- BOAT STORAGE • MOBILE SHOP SERVICE
- OVER 30 YEARS EXPERIENCE



5 YEAR LIMITED WARRANTY

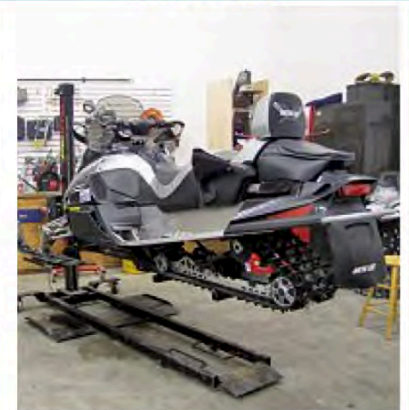


"WE HELP YOU PLAY MORE FOR LESS" ALL YEAR!

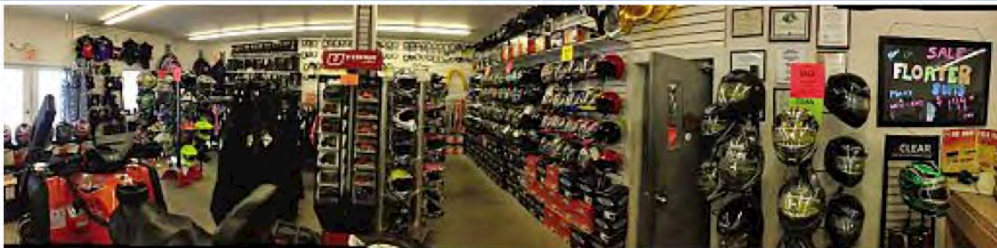
RENTALS



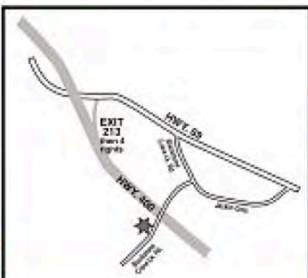
SERVICES



PARTS & ACCESSORIES



"We offer a 1 year
warranty on
ALL OUR QUALITY REPAIRS"



Rosseau Road Powersports & Marine Ltd.

25 Blackstone Crane Lake Road
On OFSC trail "C" 1.5 km south of the Seguin
rosseauroad.ca

705-378-5217
(exit 213 Hwy. 400 South to Blackstone/Crane Lake Rd.)

OPEN Mon.- Fri., 8 a.m. to 6 p.m., Sat., 9 a.m. to 5 p.m., Sun. 12 p.m. to 5 p.m.

Zebra Mussels & Boating

Joan Debie



The CLA encourages all cottagers to be aware of invasive species in and around our lake. Invasive species can move in and take over the environment and destroy the habitat of native species. Invasive species are known to be one of the leading causes of native species populations becoming threatened or endangered. They may introduce parasites and diseases that could infect native species. Once the species has been introduced to an area it is difficult to eradicate them. Species such as zebra mussels, spiny water fleas, giant hogweed and emerald ash borers are all invasive species that have caused significant harm in various parts of Ontario.

Zebra mussels are of particular concern to our water quality. While tiny, zebra mussels can cause a lot of damage to water intake pipes and docks. They have sharp shells and can cause nasty cuts on feet. Once they are here, the most common way aquatic invasive species are spread is by hitching a ride on a boat, trailer, boating equipment and fishing gear, including bait buckets.

To prevent the spread of zebra mussels into our lake, boaters visiting other lakes, particularly Georgian Bay, should ensure that their boat is thoroughly rinsed with hot water or spraying with high pressure water (the car wash in Parry Sound works well) before launching into Crane Lake. Leaving your boat to sit out of water in the sun for five days can also help to prevent zebra mussels and other water species from taking up residence in our lake. FOCA recommends that you wash and dry your boat, trailer, and other equipment and drain water from the motor, live well, bilge and transom wells while on land, immediately after leaving the water.

Many invasive species, including spiny water fleas, can cling to equipment, surviving the sun and weather on land

long enough to make it to the next body of water. To stop freeloaders, inspect your boat, trailer, and boating equipment and remove plants/animals before leaving the waterbody.

If you see any invasive species please contact a director with the CLA and call the invading species hotline at 1-800-563-7711 or visit www.invadingspecies.com. We can all do our part to keep Crane Lake free from invasive species.

<http://www.invasive.org/browse/detail.cfm?imgnum=1354030>

<http://www.eddmaps.org/ontario/species/subject.cfm?sub=10567>

<http://www.invadingspecies.com/resources/publications/>





Boating Safety

Cade Associates Insurance Brokers Limited

The Crane Lake Association obtains several benefits from membership in the Federation of Ontario Cottagers' Associations, including participation in the FOCA Association Insurance program. The following is an article written by the insurance broker of the FOCA insurance program, who have provided several risk-management focused resources at their website:

www.cadeinsurance.com/bulletin-board/

* * * *

Congratulations cottage owners! Yet another opening weekend has come and gone, hopefully with as few hiccoughs as possible. Now that the cottage is open and ready for the summer season, it's time we start to think about some of those other aspects of cottage life such as boating and boating safety. For your reference, we've compiled a list of some watercraft safety tips so that you and your family can be sure to have a fun and safe time on the water this summer!

Pack the Right Gear:

Always be sure to have the proper equipment on board your boat prior to leaving the dock in order to be prepared for any emergencies that might occur. At a minimum, all pleasure crafts should be equipped with a first-aid kit, a bailer or bilge pump, a pea-less whistle, a magnetic compass, paddles, a watertight flashlight, a buoyant heaving line that measures at least 15 metres, and one lifejacket or Personal Floatation Device (PFD) for each person on board.

Be Weather-wise:

Make sure you check local weather conditions and forecasts prior to departure. If you notice the signs of bad weather approaching, it's best to play it safe and make for shore.

Common Sense is a Boater's Best Friend:

One of the most important aspects of boating safety is also one of the easiest! Use your common sense and be sure to operate your craft at safe speeds at all times, especially in crowded areas or when participating in water sports. Watch for and be respectful of buoys and other navigational aids – they are there to ensure boating safety for everyone on the water.

Alcohol and Boating Do Not Mix:

Just like driving under the influence, operating your watercraft under the influence of alcohol is an offense under the Criminal Code of Canada. Enjoy that boating while you're out on the water but save your drink for when you're safely on the dock.

PFDs are a Life Saver:

Before leaving the shore, be sure to fit each member of your onboard team with an appropriately sized Personal Floatation Device. They aren't called **life**jackets for nothing! They are the best way to be sure that you and your crew remain safe while out on the lake this summer.

Don't forget your Pleasure Craft Operator Card!

Make sure your PCOC is on board with you when you are operating your watercraft – it's the law.

For further information regarding boating safety and pleasure craft operating requirements, please visit the following link for Transportation Canada's Safe Boating Guide: <http://www.tc.gc.ca/media/documents/marinesafety/TP-511e.pdf>

Whether you're new to boating or have been zipping around your lake for years, it is always a good idea to review boating safety rules at the beginning of the season in order to be sure that you and your friends and family are prepared for a safe summer on the water.

Stay safe, boaters!

Outboard Motor & Small Engine Maintenance

Eric Piirto



It is important to take care of your motorized assets if you want them to perform consistently. Below is a suggested list of things to do at the beginning and end of the season to ensure your equipment works well and lasts.

Season Opening

Small engines (chainsaws, yard equipment, water pumps, generators, etc.)

- Add fresh gas mixed with air cooled engine oil (not marine) to manufacturer's recommendation. If using last year's gas, whether treated with fuel stabilizer or not, pour a small amount in a glass vessel and note that it should be clear. If cloudy or discoloured – discard.
- Inspect and clean/replace air filter membrane per manufacturer's recommendations.

Outboard motors

- After ensuring that the gas is not cloudy or discoloured, connect the gas line ensuring that the arrow on the primer bulb points to the engine.
- After starting the engine, ensure you have a good stream of water from the tell-tail nozzle on the engine. If not, it may be plugged, poke a wire up the nozzle to clear clog. Have it checked by a mechanic if this does not work.
- Before starting out, ensure you have all the required safety equipment. Don't forget to check the flash light and carry a copy of your Boaters certificate & boat registration (if 10 hp or over). I carry copies in our orange safety kit.
- Check your running lights, if equipped.

- Another caution that you may consider is installing an automatic bailer in your boat if you are away from the cottage for any length of time and the boat is not monitored.

Season Ending

Small engines

- Drain gas tank (if possible) and run engine until it stalls.
- It may be difficult to drain gas from some engines such as generators so be sure to treat any remaining gas with fuel stabilizer.

Outboard motors

- Disconnect gas line and run engine until it stalls. Store motor in upright position.
- Treat all gas with fuel stabilizer per manufacturer's recommendation.
- Replace lower unit lubricant. Check for worn/broken/missing washer seals. Have lower unit serviced if visible water or murky coloured lubricant.
- Remove propeller and check for fishing line and lubricate prop shaft.
- Change oil if 4 stroke motor with recommended marine oil viscosity.
 - Grease all lubrication points - see manual.
 - Change spark plugs, especially if running rough, hard to start or in heavy use.
- Above all, be a safe and courteous operator.

**We have all kinds of outdoor covers from boats to ATVs to patio furniture and more.
We are Canada's source for covers and we are local cottage owners.**

SHOP NOW



KEEP IT  UNDER COVER

www.outdoorcovers.ca



**South Parry Sound
area Real Estate**

Jim Marshall
Broker

www.jimmarshall.ca



RE/MAX[®]

Parry Sound - Muskoka
Realty Ltd., Brokerage

(705) **774-0453** (cell)

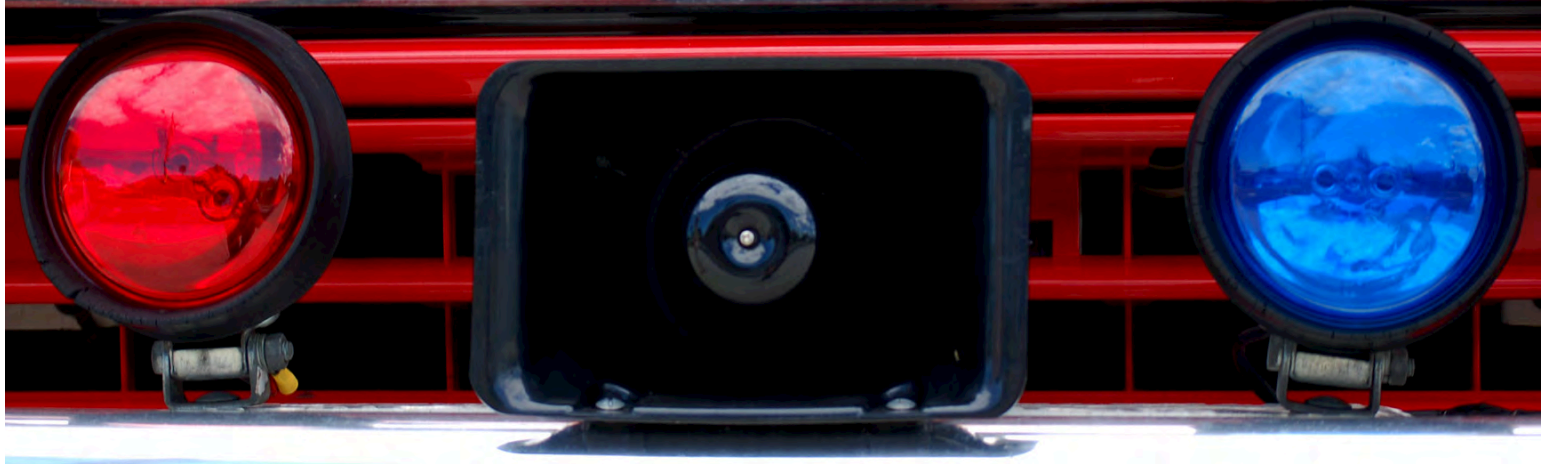
(705) **746-9336** (office)

Each office independently owned & operated.

Fire Committee Report

Bruce Sanderson

In the event of a fire or medical emergency on Crane Lake, call 705-751-FIRE.



It's that time again. Do I say that every year? No matter, just as the snow melts and the Trilliums bloom, it isn't really that long before we're on the lake again. Here's hoping for a longer and warmer cottage season than last year! And now, a few updates on current activities related to the Crane Lake Fire Committee, plus some helpful reminders.

Professional Fire Support:

The big news this year is of course, Seguin Township Fire Department is now under contract with the TOA to provide emergency response to structure fires on Crane Lake. Out of all eligible properties on the lake, 73.06% responded "Yes" on their ballots, which is an outstanding response. The contract is for 5 years and is renewable. The cost is fixed for the first 5 years at \$236/yr. added on to the tax bill for each property on Crane Lake with a structure. Even though the Crane Lake Fire Committee may still respond to a fire incident on the lake (if members happen to be on the lake at that time), Seguin Fire responders will arrive 365 days a year. This will fill a large gap in potential response, especially during the early spring, late fall, winter, or any weekday during the summer that Fire Committee members are not on the lake or able to respond.

New Fire Pump on the Fire Boat:

It's hard to believe that it's been almost 4 years now since the new Fire Boat motor was installed. Well now, after overwhelming approval from the membership at the 2014 AGM, we finally have a new Fire Pump for the Fire Boat to replace our ageing and cantankerous Tohatsu model. The new pump is manufactured by Waterax, (originally Wajax) a standard in high pressure, high volume fire pump manufacturing since the mid-1900's. The pump head is the same one used by MNR forest fire fighters and many volunteer fire fighting teams across North America. The pump motor is a Briggs and Stratton 4 stroke with an electric start and the pump priming is automated and environmentally friendly. The features of this combo will make it easy to start and use by anyone on the lake, and easy to repair with readily available replacement parts now and into the future. This pump has been endorsed by Seguin's Fire Chief, which is important as Seguin Fire Fighters will have access to it when responding to incidents on Crane Lake. And the icing on the cake is, the total cost of the purchase was about half of our original budget. Regarding the "environmentally friendly priming" feature, not everyone knows this, but our old Tohatsu pump used oil to prime it. Therefore every time it was primed a little bit of oil

was released into the lake, a fact that pained all of us on the Fire Committee. The new pump is primed by means of air pressure created by the exhaust manifold. By the time you read this, the new pump will be on the boat. Please drop by next time you are at the marina to check it out.

Ongoing Maintenance:

As always, other than being willing to respond to a fire incident should it occur, the primary role of Crane Lake Fire Committee members is to test and maintain the Fire Protection equipment. This includes regular inventory checks and tests of the Fire Boat and the portable pump boxes and all their equipment. We are always looking for new members for the Fire Committee to assist in these and other behind the scenes functions, including communications or database updating. If you would like to become more familiar with the equipment, where it is located and how it works, or if you simply want to help out and are willing to learn, please contact me at brucesanderson@outlook.com or 647-402-9402. We would be happy to have you on the team!

Timely Reminders:

It is the law in Ontario that every home (and cottage) must have operational smoke detectors on every level and every dwelling that has a fossil fuel burning appliance must also have at least one operational carbon monoxide detector (ideally one on each level). Remember, carbon monoxide is an odourless, colourless gas and can easily build up to lethal levels if your wood burning or fuel burning appliance is not operating correctly.

A good rule of thumb for the cottage is when opening up in the spring, check or replace all your smoke detector batteries and carbon monoxide batteries as applicable. Batteries left in sub-zero temperatures over the winter can burst, expand, or prematurely fail. Even though back in the city I change my smoke detector / carbon monoxide detector batteries in the fall, at the cottage I do it in the spring. Also remember that most detectors have a "test" button. This should be used to verify operation at least once a month. Don't store your fuels near the cottage, including gasoline, spare propane tanks, kerosene, wood piles, etc. If a fire should start in, or spread to these fuel sources, it will rapidly accelerate.

The further they are from your cottage, the more time you will have to escape and call for help.

Remember the rules for open fires in the Township of the Archipelago. No open fires are allowed of any sort during daylight hours. Also watch the Fire Rating signs posted by the Township on the roads into the lake. If the Fire rating is high (red zone), that means no open fires period, even at night.

Always follow safe and conscientious practices when dealing with any fire or flammable substance. Always have a pail of water or hose close by, and never leave a fire unattended.

Remember, the things you come up to the cottage to enjoy, are the same things your neighbours and friends come to enjoy. You must act responsibly not only for yourself, but for your family, all the other families on the lake, and future generations. A landscape affected by fire will not only change the beautiful vistas we enjoy on Crane Lake, but also affect the values of all of our properties. Nobody wants to be "that guy".

Best wishes to all of us for a safe, healthy and thoroughly enjoyable 2015 on Crane Lake!



White Squall
of Georgian Bay

Over 400 boats & boards!
whitesquall.com 705 342 5324

Dr. Tracey Beaulne ND, R.Ac Naturopathic Doctor & Acupuncturist is at Crane Lake this summer!

Dr. Beaulne treats individuals who suffer with gas, bloating, and other chronic gastrointestinal upset, weight gain, low energy, muscle aches, stress, auto immune diseases, thyroid issues, food reactions and hormonal imbalances.



The gastrointestinal tract and its ecosystem is your portal to optimal physical and mental health.”

Dr. Tracey Beaulne

Naturopathic Doctor & Acupuncturist

Visits covered by most extended health insurance plans.

Learn how to prevent and alleviate health conditions by improving your gut health.

dr-beaulne@rogers.com

Toronto: (416) 529-1919

Crane Lake: (705) 378-2061

www.thetummyclinic.com

New Rules for ATVs start July 1, 2015

Federation of Ontario Cottagers' Associations



The Crane Lake Association belongs to the Federation of Ontario Cottagers' Associations. An organization with over 50 years of history, FOCA represents cottage and waterfront property owners at various levels of government and acts as an advocacy organization. The following is drawn from their recent update related to the Ontario regulations on ATVs. Articles like this and on a wide range of other topics can be found on their website: www.foca.on.ca

Ontario municipalities will still have to pass by-laws to allow off-road vehicles onto municipal roads and highways, but **effective July 1st, 2015, more types of these vehicles will be allowed to drive on the shoulders of Ontario's public roads.**

Currently only ATV's that are manufactured to carry single riders are allowed on public roads, but the new rules will also allow for 'two up' ATVs, side-by-side ATVs, and utility terrain vehicles.

July 1st until September 1st, 2015 is being considered an "education period."

"Our government recognizes the importance of a vibrant, sustainable and safe power sports sector in Ontario, and we support providing Ontarians with more options to safely explore our vast province," said Steven Del Duca, Minister of Transportation, in a statement.

"We're announcing this now so that municipalities will have time to adjust their own regulations accordingly," said Sudbury MPP Glenn Thibeault in a press release.

New safety requirements were also recently announced:

- all riders, including drivers and passengers, will be required to wear helmets and use a seat belt or foot rest where applicable
- operators of ATVs and ORVs along a road or highway must hold at least a G2 or M2 driver's license, and
- vehicles must be registered and insured.

YOUR STORE

FOR COMFORT ENGINEERED SOFAS & QUALITY MATTRESSES,



CANADIAN MADE FURNISHINGS, AREA RUGS & ANTIQUES



Visit Harris' Furniture Store and Sales Barn for a Unique Home & Cottage shopping experience. We offer Mattresses of all sizes and comfort levels. Choose a sofa from our stock inventory or pick your own style & fabric or leather from our wide selection. Unique, often one of a kind classic antiques repurposed into functional pieces for today's needs & lifestyles are always being offered.

Your #1 Mattress & Sofa Store

[facebook.com/harrisfurnitureandantiques](https://www.facebook.com/harrisfurnitureandantiques)

Selling? Call us - we are actively buying contents / collections & single items

17 Parry Sound Drive 705-746-5100 Toll Free 1-866-746-5100 www.harrisfurniture.ca sales@harrisfurniture.ca



We provide professional Delivery